

---

---

**The South Canterbury  
Arts Society (Inc.)**

**1960**

**Eighth Annual  
EXHIBITION**

---

---

**CATALOGUE**

---

---

**TECHNICAL COLLEGE HALL  
Arthur Street, Timaru**

**30th AUGUST to 9th SEPTEMBER, 1960**

**Hours:**

11 a.m. to 10 p.m. (except Saturday, 7 p.m.  
to 10 p.m., and Sunday, 2 p.m. to 5 p.m.)

**Entrance:**

Adults 2/-, Children 6d. Pass for Exhibition 5/-.  
School Children with a Teacher 3d.

---

---

---

## “ROWNEY” Artists’ Materials

As the only stockist of “Rowneys” world famous artists’ materials in South Canterbury, we wish to advise all artists we have just landed further large stocks of . . .

- ROWNEYS Oil Colours, all sizes.
- ROWNEYS Water Colours, whole tubes.
- ROWNEYS Hogs Hair and Sable Oil Brushes.
- ROWNEYS Finest Sable Water Brushes.
- ROWNEYS Artists’ Canvas in 3 qualities.
- ROWNEYS Canvas Boards.
- ROWNEYS Oil Sketching Papers.
- ROWNEYS Oil Sketching Blocks.
- ROWNEYS Pastel Sets and Papers.
- ROWNEYS Whatman Water Paper.
- ROWNEYS David Cox Water Paper.
- ROWNEYS Charcoal, Dippers, Palettes, —ROWNEYS etc.

## Picture Framing

We have a skilled Picture Framer to frame any type of painting or picture. Wide range of mouldings to choose from.

**SLIGO BENBOW & MORSE Ltd.**

“THE DULUX HOUSE”

COUNTRY CLIENTS: PHONE 5592 FOR  
MAIL ORDER SERVICE.

## CATALOGUE

Gns.

H. M. BAKER (S.C.)

- 1 Farm Architecture (w) 5
- 2 Waitohi Ti-Kouka (o) N.F.S.
- 3 Mount Cook (o) 9
- 4 Historic Cromwell (o) 14
- 5 This Old House (o) 12

MYRTLE G. BARTLETT (C.)

- 6 Mt. Torlesse from Waimakariri 12
- 7 Mt. Cook from Lake Pukaki (w) 6

OLIVE BEKEN (C. & N.S.)

- 8 Braemar, Tasman Valley (o) 35
- 9 Baton River, Nelson (o) 15
- 10 Spring at Richmond, Nelson (o) 15

PHYLLIS D. BETHUNE (S.C.)

- 11 View of the Waihao (o) 20
- 12 Holiday Houses, Wanaka (o) 14
- 13 Old Millstream, Willowbridge (o) 12
- 14 Autumn Fields, Waituna (o) 10
- 15 Lake Tekapo (o) 10

MARGARET BORRIE (N.O.)

- 16 Fifeshire Rock, Nelson (w) 6
- 17 Magnolias (w) 7
- 18 Still Life (o) 6

N. van den BROEKE (S.C.)

- 19 Harbour Scene (o) 5
- 20 Early Morning (o) 5

CLIFFORD A. BRUNSDEN (S.C.)

- 21 Mt. Peel near Pleasant Point (w) 10
- 22 Overlooking Pleasant Point (w) 19
- 23 Farm Yard, Makikihi (w) 8
- 24 Four Peaks, Pleasant Point (w) 12
- 25 Mesopotamia, Raw Tor (w) 12
- 26 Foreign Travel (o) 15

F. W. CHAPMAN (S.C.)

- 27 Mt. Cook from “The Rest” (o) N.F.S.

ANNE CHARMAN (N.Z.A. & S.C.)

- 28 Clare (o) N.F.S.
- 29 Lake Tekapo (w) 10
- 30 Mount Peel (o) 15
- 31 St. Bathans Lake (o) 9
- 32 St. Bathans Town (o) 8
- 33 Landscape (o) 14

34	<b>M. CHARTERIS (S.C.)</b> Fallen Leaves (o)	Gns. 5
35	<b>JOAN E. COPLAND (S.C.)</b> Evening, Ayres Rock, C. Australia (o)	20
36	Spinnifex and Sand, C. Australia (o)	5
37	Ghost Gums, Alice Springs (o)	5
38	<b>OLGA COX (C. &amp; O.)</b> Hampden Coast (w)	7
39	Riwaka River (w)	7
40	<b>LULA A. CURRIE (O.)</b> Mt. Temple near Diamond Lake (w)	6
41	<b>A. A. DEANS (S.C.)</b> Clyde River (w)	65
42	Woodvale Montalto (w)	18
43	Awatere Valley, Marlborough (w)	18
44	Konini (o)	20
45	Skating Rink Road, Staveley (w)	30
46	Lynn Creek (w)	25
47	<b>JOAN DENNISON (S.C.)</b> Andersons Art Gallery, Invercargill (ink)	5
48	Golden Birch (ink & wash)	5
49	Snow on Tara Hills (w)	8
50	Old Gums (w)	6
51	Mt. Dalgety Station Homestead (o)	12
52	Wellington Harbour (o)	10
53	<b>M. C. DOVE (S.C.)</b> Campbell's Dairy, Mesopotamia (pen & wash)	4
54	Cook Shop, Mesopotamia (o)	5
55	Stables, Cloudy Range (o)	5
56	Fergie's Cottage (o)	5
57	<b>P. EAST (S.C.)</b> The Forgotten Gate (w)	3
58	Queen Victoria Rock (o)	N.F.S.
59	<b>HILDA J. EDGAR (C.)</b> Waiting for the Tide, Nugget Pt. (w)	10
60	Westland Peaks (o)	12
61	Basket of Roses (o)	10
62	<b>OLIVE ELSOM (C.)</b> Fishermen, Marbella, Spain (o)	20
63	St. Ives, Cornwall (o)	18
64	St. Tropez, South of France (o)	15

65	<b>M. E. ENGLAND (S.C.)</b> Monarch's First Flight (w)	Gns. 10
66	Dawn Over the Links, Motoweka (w)	10
67	Beachhaven, Overlooking Hobsonville (w)	N.F.S.
68	The Linden Tree (w)	8
69	<b>RONA FLEMING (C.)</b> Kaikoura Peninsula (o)	10
70	North Canterbury Cliffs (o)	15
71	Beacons in the Buller (o)	10
72	<b>M. FLETCHER (N.O.)</b> Beyond the Kawarau (w)	4
73	Matamata (w)	3
74	<b>NGAIRE FOSTER (S.C.)</b> Evening Shadows (o)	3
75	Rejected, Church of S. Stephen (o)	10
76	Southern Alps, Shapes and Shadows (o)	3
77	Estuary, South Brighton (o)	4
78	My Guide (o)	4
79	Only a Rose (o)	10
80	<b>J. E. FRASER (C. &amp; S.C.)</b> Glen Mary, Ohau (w)	3
81	Mount Sefton (w)	10
82	Mt Cook from Glentanner (w)	10
83	Still Life (w)	8
84	Herbert, North Otago (w)	7
85	Ohau (w)	7
86	<b>T. F. GALLAGHER (N.O. &amp; S.C.)</b> Eglinton Valley (o)	11
87	Through the Gums, Wakatipu (o)	9
88	Dawn, Lake Ohau (o)	9
89	Gum Trees and Farmlands (o)	9
90	Morning Light, Wakatipu (o)	8
91	Spring (o)	7
92	<b>EDITH GARDNER (C.)</b> Mitre Peak (w)	6
93	Celmesias (o)	7
94	Hagley Park (o)	5
95	<b>NORA M. GARDNER (C.)</b> Glendhu Bay (oil on vellum)	4
96	Milford Sound (oil on vellum)	4
97	Lake Manapouri (oil on vellum)	4

98	<b>EDNA GEDDES</b> (S.C.)	Gns.	7
99	Omarama (o)		
100	Mt. Domett from Ikawai (o) Upper Reaches, Lake Waitaki (o)		7
101	<b>PAMELA GRAHAM</b> (S.C.)	N.F.S.	
102	Old Salt (o) Frogman (o)	N.F.S.	
103	<b>FRANK GROSS</b> (C.)		30
104	Canterbury Foothills (w)		20
105	Country House (w) Waterfront (o)		30
106	<b>ELIZABETH R. GUTHRIE</b> , (N.O.)		7
107	Autumn Flowers (o)		5
108	Mt. Domett (w) From Road to Ngapara (w)		5
109	<b>F. V. HALL</b> (N.S. & C.)		10
	Winter Morning, Kaikoura (o)		
110	<b>P. W. HARGREAVES</b> (N.O.)		5
111	Crib, Kakanui (o)		5
112	Trees, Waitaki River, Duntroon (o) Coast-line, Kakanui (o)		5
113	<b>N. B. HARVEY</b> (S.C.)		12
114	Lakeside (o)		9
115	Counter-Rhythm (o)		10
116	Pastorale (o)		7
117	Bay Drive (o)		7
118	Snow Shadows (o) Rejaillion (o)		7
119	<b>RITA HAYHURST</b> (S.C.)		8
120	The Deserted Stables (o)		8
121	Across the Valley (o)		8
122	Te Ngawai (o)		7
123	Flower Study (o)		5
124	Aorangi, Cave (o) Hydrangeas (o)		4
125	<b>M. J. HEALY</b> (S.C.)	N.F.S.	
126	Calm Water (w) Waiting the Tide (w)		3
127	<b>VALERIE O. HEINY</b> (C.)		15
	Rata Forest (o)		
128	<b>ESTHER S. HOPE</b> (S.C., C., & N.Z.A.)		
129	Lake Alexandrina (w)	N.F.S.	
130	Afternoon, Lake Alexandrina (w)		18
131	A Wintry Day (w)		18
132	Backwater of Tekapo River (w)		25
133	Little Jetty, Lake Alexandrina (w) View from the Grampians (w)	N.F.S.	18

134	<b>M. IRWIN</b> (N.O.)	Gns.	7
135	A Vase of Tulips (o) Arrangement of Flowers (w)		5
136	<b>DOROTHY H. JONES</b> (S.C.)		15
137	Irises (w)		12
138	Torlesse Peak (w)		12
139	Near Trentham (w) Upper Reaches, Hutt River (w)		10
140	<b>FRANK KEE</b> (N.Z.A.)		4
141	The Cat (monotype) Spring (monotype)		6
142	<b>J. KELMAN</b> (N.O.)		10
143	Cleaning out the Fowlhouse (o) I Knew him once but now he is gone (pen and ink)		2
144	On a Walk; what's next? (w)		3
145	<b>C. A. LEEMING</b> (S.C.)		11
146	Anemone (charcoal)	N.F.S.	
147	Self Portrait (o) Thomas Morton (w)	N.F.S.	
148	<b>ALISON LITTLE</b> (S.C.)		12
149	Tobacco Kilns, Motueka (o)		12
150	Woodstock, Motueka (o)		8
151	Flowers, Springtime (o)		8
152	Pareora Gorge (o)		12
153	Mount Cook (o) Tekapo (o)		12
154	<b>JANET E. McCORMICK</b> (S.C.)		6
155	Pohutukawa, Coromandel Penin- sula (o) Limestone Rocks, Cave (o)		4
156	<b>SUSAN F. McDOWELL</b> (N.O.)		7
157	All Day Bay (o) Winter Afternoon, Takaro Park, Oamaru (o)		7
158	Cyclamen (o)		8
159	<b>JACK McNICKLE</b> (N.O.)		
160	Christchurch Catholic Cathedral (pencil) St. Luke's, Oamaru (pencil)	N.F.S. N.F.S.	
161	<b>A. G. MANSON</b> (S.C. & C.)		23
162	Pareora Zigzag (o) Timaru Technical College War Memorial (wood sculpture)	N.F.S.	

163	<b>RUTH MILLAR (S.C.)</b>	Gns.	
164	Decorative Landscape (wash)	7	
165	Nocturne (o)	12	
166	Rain Approaching (o)	10	
167	Spring Morning (o)	10	
168	Shingle Yard (wash)	7	
169	Cliffs, Naseby (o)	8	
170	<b>PEARL MITCHELL (S.C.)</b>		
171	Hydrangeas (o)	4	
172	<b>E. MOODY (S.C.)</b>		
173	Sabitu (leather picture)	4½	
174	Eastern Girl (felt)	4	
175	Picture (felt)	3½	
176	Sea of Harmony (felt)	4	
177	Dancers (felt)	3	
178	Fish (leather)	4½	
179	<b>W. F. MOORE (C.)</b>		
180	Amuri Bluff, Kaikoura (o)	12	
181	Fishing Boats, Sumner (o)	12	
182	Beside Still Waters (o)	10	
183	<b>M. J. MOUNTAIN (A.)</b>		
184	Whitford Estuary, Auckland (w)	9	
185	Sandspit, Howick, Auckland (w)	9	
186	Quarry (w)	8	
187	<b>MARY MULLIGAN (S.C.)</b>		
188	Kia Ora Bay (o)	9	
189	The Rock (o)	7	
190	Australian Scene (o)	12	
191	Mt. Somers, Staveley (o)	10	
192	<b>L. M. MUNRO (N.O.)</b>		
193	Fodies Bridge (pen, ink & wash)	3	
194	Autumn at Tarras	5	
195	(pen, ink and wash)	6	
196	Clutha River, Cromwell (o)		
197	<b>MARJORIE NAYLOR (C.)</b>		
198	Waihukahuka Falls (o)	50	
199	Lone Pine, Tahuna Beach (w)	18	
200	Nature's Seat (w)	25	
201	<b>M. E. NEVILLE (S.C.)</b>		
202	Mt. Cook from Braemar (o)	15	
203	Rocky Headland, Bluff (o)	12	
204	Autumn, South Canterbury (o)	10	
205	Pancake Rocks, Punakaikai (o)	10	
206	Driftwood and Shells (o)	9	
207	Lake Tekapo (o)	9	
208	<b>J. MARGARET PARKER (S.C.)</b>		
209	Lake Ohau (w)	12	
210	Shearing (o)	9	
211	Nor'-west, Tekapo (o)	12	
212	<b>ALICE PELVIN (S.C.)</b>		
213	Orari (w)	4	
214	At the Bend of the River (w)	5	
215	Iris (w)	3	
216	<b>W. PENTY (S.C.)</b>		
217	Still Life (w)	4	
218	The Farm by the River (w)	4	
219	Pink Gladioli (w)	4	
220	Road to the Hills (o)	6	
221	Where the River Winds (o)	6	
222	Spring by the Waihao (o)	5	
223	<b>VALERIE PERRY (S.C.)</b>		
224	Hook Bush (o)	5	
225	<b>GYPSY POULSTON (S.C.)</b>		
226	The Gum Tree (w)	8	
227	Winter (w)	8	
228	Quiet Haven (w)	7	
229	Fairlie Landscape (w)	7	
230	Barbara (o)	N.F.S.	
231	Old Mill, Fairlie (w)	N.F.S.	
232	<b>C. E. PRICE (S.C.)</b>		
233	Chinese Jungle House, Malaya	N.F.S.	
234	(w)		
235	Blue Waters, South Coast,		
236	N.S.W. (w)	N.F.S.	
237	The Old Shed, Waihaorunga (w)	N.F.S.	
238	<b>M. S. PURSER (O.)</b>		
239	Taiari Mouth (w)	6	
240	Pioneer's Cottage, Otago Central (w)	6	
241	<b>SYBIL RICH (S.C.)</b>		
242	Glen Mary (o)	7	
243	<b>RUBY SCOTT (S.C.)</b>		
244	Rhododendrons (o)	18	
245	Old Pine Trees, Mt. Horrible (o)	10	
246	Outdoor Chapel, Raincliff Scout		
247	Camp (o)	10	
248	Hydrangeas (o)	10	
249	View from Mt. Horrible (o)	8	
250	Winter Time, Lake Tekapo (o)	8	
251	<b>BERNICE SHACKLETON (S.C.)</b>		
252	Kelcy's Road, Waimate (o)	7	



## OFFICERS 1960-1961

Patroness: Mrs J. C. Wigley.

President: Mr L. E. Finch.

Vice-President: Mr C. W. Don.

Committee: Mesdames A. Charman, J. Copland,  
B. Hall, J. M. Parker, Messrs N. B. Harvey,  
and John Richards.

Hon. Secretary and Treasurer:

Mrs R. Scott, 33a Sefton Street, Timaru.  
Phone 88-972, Timaru.

The South Canterbury Arts Society (Inc.) (the successor to the South Canterbury Arts Society, founded in 1895 and functioning until about 1928) commenced as the South Canterbury Arts Club in 1950 and was incorporated in August, 1953. It is a member of the Association of New Zealand Art Societies. It has held yearly Exhibitions since 1953 and monthly meetings of members. It now holds four Exhibitions a year, viz., Autumn, April/May; Travelling, May/June; Spring (main), September; and Open-Air, December. The Spring Exhibition is open to all Dominion Arts Societies, the others to South Canterbury only. Present membership (approx.) is working members 100, non-working 50.

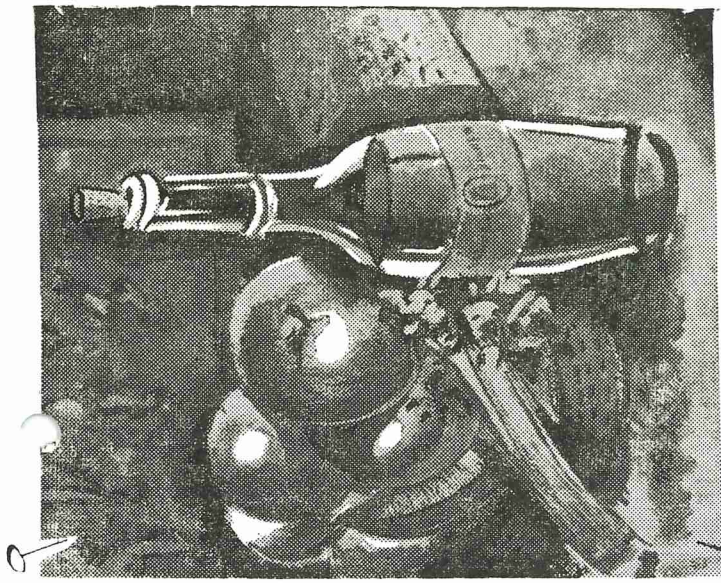
ABBREVIATIONS: (o) Oil Colour; (w) Water Colour. (A.), (C.), (N.S.), (N.O.), (N.Z.A.), (O.), and (S.C.) mean member of the Auckland, Canterbury, Nelson-Suter and North Otago Art Societies, the N.Z. Academy of Fine Arts and the Otago and South Canterbury Art Societies respectively.

SALE OF PICTURES: Prices of pictures for sale are marked (in guineas) in the right-hand column. N.F.S. in that column means Not for Sale. ALL purchases must be made through the Secretary or on enquiry from the Doorkeepers.

A red wafer means SOLD.

NOTICE: All pictures whether sold or not MUST REMAIN hung till close of the Exhibition; and MUST BE REMOVED not later than NOON on the following day, the 10th September, 1960.

P R I C E 1/-



## the first brush stroke

sets the pace... captures the mood... Like the artist, a designer of contemporary fabrics and furnishings merges colour and form to bring you only the most tasteful objects of art for your home.

Next time to town, visit Scotts and see what art can really do for your home. Inspect their exquisite china and brocades, their unusual lampstands and fine fabrics.

SCOTTS PROVE DECOR A PROGRESSIVE ART!

# Scotts

## ART FURNISHERS

## LATE ENTRIES

ALICE BORRIE (O.)		Gms.
293	Siesta (w)	8
294	Spring (w)	3
295	From Otematata Saddle (w)	3
WINIFRED COX (O.)		
296	Gladioli (o)	10
297	Winter (o)	5
A. GORDON COX (O.)		12
298	On the Shag River (o)	
G. W. EDWARDS (O.)		
299	Portrait (o)	
300	The Urehin (o)	N.F.S. 15
THOMAS ESPLIN (O.)		
301	Brown Study (o)	8
302	Frankton Arm (o)	3
303	Ebb Tide (o)	4
R. FLETCHER (S.C.)		N.F.S.
304	Fruit Bowl (o)	14
BETTY FRASER (O.)		
305	Still Life (applique)	5
306	Still Life (applique)	5
307	Child's Picture (applique)	4
GRETE GRAETZER (O.)		
308	Daybreak to Sunset (wash)	N.F.S. 14
309	Ocean Brides (O.)	
EDNA GRANT (S.C.)		
310	Combined Hunt (o)	20
311	The Green Goddess (o)	15
EANA B. JEANS (O.)		
312	Sluicing, Bannockburn (w)	10
313	Fuchsias in Spring (w)	5
MYRA KIRKPATRICK (O.)		
314	Gray Day (o)	20
315	Glimpse of Blue Lake (o)	25
SHONA McFARLANE (O.)		N.F.S.
316	Portrait (o)	
J. D. McLEAN (O.)		
317	Summer Evening, Earnsclough (o)	N.F.S.
J. MARGARET PARKER (S.C.)		
318	Near Lake Hayes (o)	12
L. PETERS (O.)		
319	Landscape (o)	5
320	The Old Church (o)	4
E. M. REID (O.)		
321	Clematis and Primrose (w)	5
322	Sod Cottage, Evening (w)	4
MYRA THOMPSON (O.)		
323	On Road to Glendhu (o)	8
324	The Irrigated Paddock (o)	10
325	A Country Road (o)	12



---

---

*Robt. C. Keeper*

*for Pictures and Picture Framing*

☆

We have a large selection of  
Modern Mouldings.

☆

Good selection of Prints by  
Modern and Old Masters.

☆

Also see our selection of  
Unusual China and Giftware.

SO BRING YOUR FRAMING AND  
PICTURE PROBLEMS  
to

*Robt. C. Keeper*

*Picture Framing and Art Dealer*

309 Stafford Street

(Opp. Ballantynes)

:: Phone 1341 ::

---

---

---

---

ART BOOKS FROM  
WHITCOMBE'S

Walter Foster Art Books	.....	8/6 each
Decorative Art, 1959-1960	.....	42/6
History of Painting	.....	55/-
The French Impressionists (in full colour)	.....	34/-
It's Fun to Paint	.....	10/6
Watercolour Painting	.....	9/6
Drawing Animals	.....	8/-
Book of six Cezanne Prints	.....	10/6
Book of six Degas Prints	.....	10/6
Book of six Urillo Prints	.....	10/6
Van Gogh (Phaidon Press)	.....	31/-
Art of Far Lands	.....	67/6

Postage Extra

**WHITCOMBE & TOMBS LTD.**  
STAFFORD ST.  
TIMARU